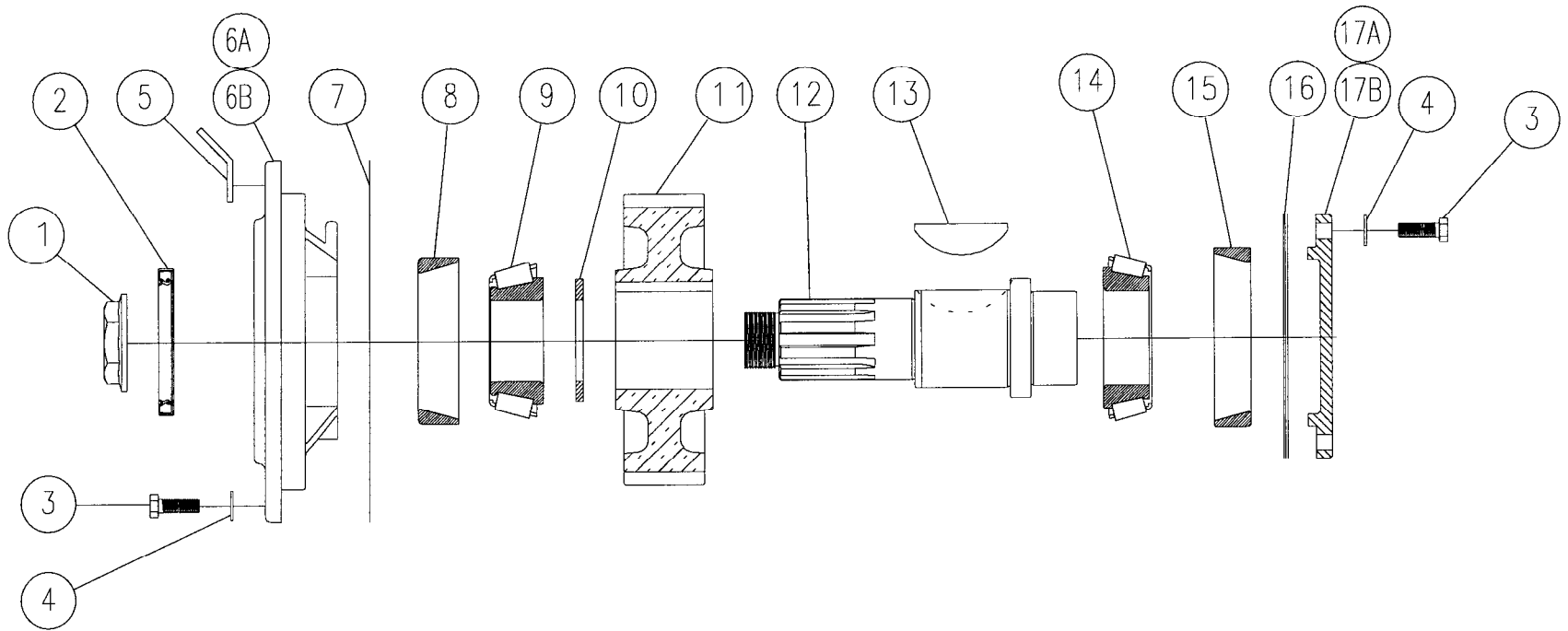




## **TC-270 TRANSFER CASE PARTS MANUAL**



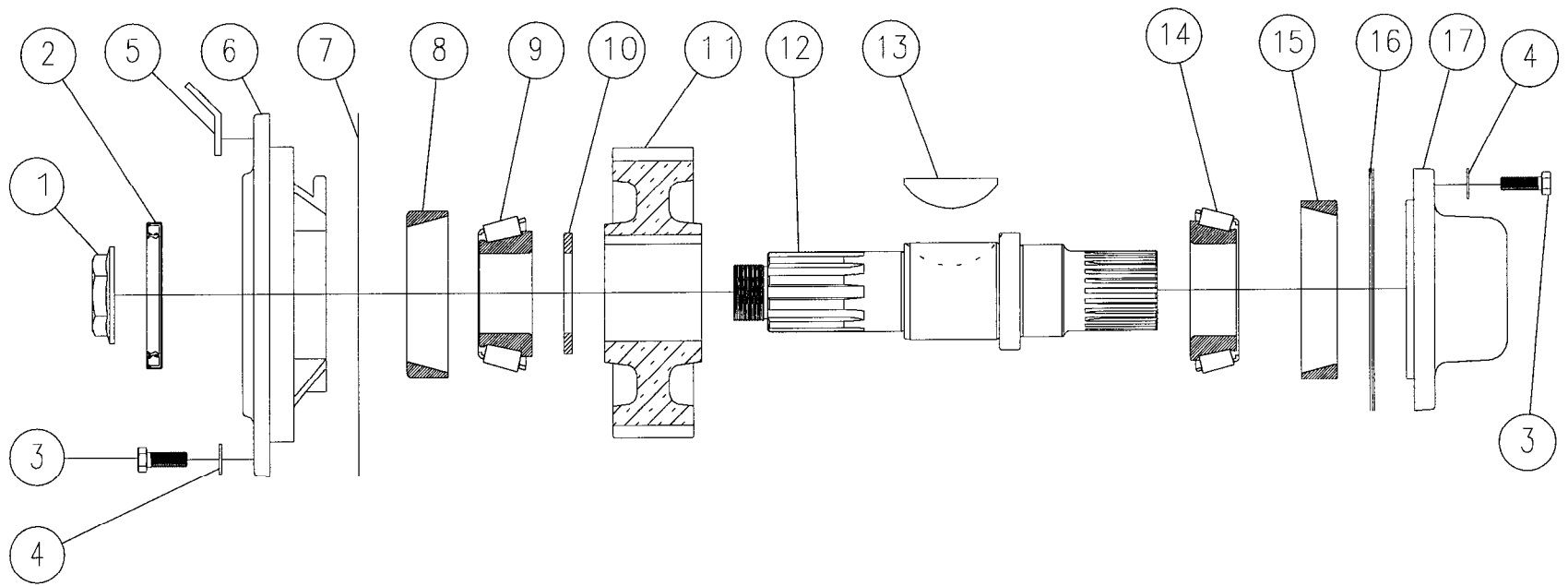
TC-270 UPPER SHAFT ASSEMBLY WITHOUT PTO PROVISIONS

**TC-270 UPPER SHAFT ASSEMBLY**  
**Models without PTO Provisions**

| <u>ITEM</u> | <u>PART NO.</u> | <u>DESCRIPTION</u>                             | <u>QTY.</u> | <u>FOOT<br/>NOTE</u> |
|-------------|-----------------|--|-------------|----------------------|
| 1           | 688 738         | Nut, 1 3/4-12, Lock                            | 1           |                      |
| 2           | 732 355         | Seal   | 1           |                      |
| 3           | 265 238         | Bolt, 7/16-14 x 1 1/4 Hex Head                 | 16          |                      |
| 4           | 927 347         | Washer, 7/16 Flat                              | 16          |                      |
| 5           | 273 687         | Bracket, Lifting                               | 2           |                      |
| 6A          | 237 542 001     | Carrier, Front <u>with</u> Lubrication Port    | 1           |                      |
| 6B          | 237 542 003     | Carrier, Front <u>without</u> Lubrication Port | 1           |                      |
| 7           | 427 523         | Gasket   | 1           |                      |
| 8           | 233 492         | Bearing Cup                                    | 1           |                      |
| 9           | 233 493         | Bearing Cone                                   | 1           |                      |
| 10          | 927 797         | Washer, Input Shaft Spacer                     | 1           |                      |
| 11          | 432 628         | Gear, Input Shaft                              | 1           |                      |
| 12          | 776 229         | Shaft, Input <u>without</u> PTO Provision      | 1           |                      |
| 13          | 966 326         | Key  | 1           |                      |
| 14          | 233 489         | Bearing Cone                                   | 1           |                      |
| 15          | 233 375         | Bearing Cup                                    | 1           |                      |
| 16          | 744 278         | Shim, .030 Thick, Coral                        | A/R         | 1                    |
|             | 744 279         | Shim, .015 Thick, Pink                         | A/R         | 1                    |
|             | 744 282         | Shim, .005 Thick, Blue                         | A/R         | 1                    |
|             | 744 283         | Shim, .002 Thick, Red                          | A/R         | 1                    |
| 17A         | 235 568 001     | Cap, Top Rear without Lubrication Port         | 1           |                      |
| 17B         | 235 568 002     | Cap, Top Rear with Lubrication Port            | 1           |                      |

Footnotes:

1. See section 6.2 of service manual for adjustment procedures.



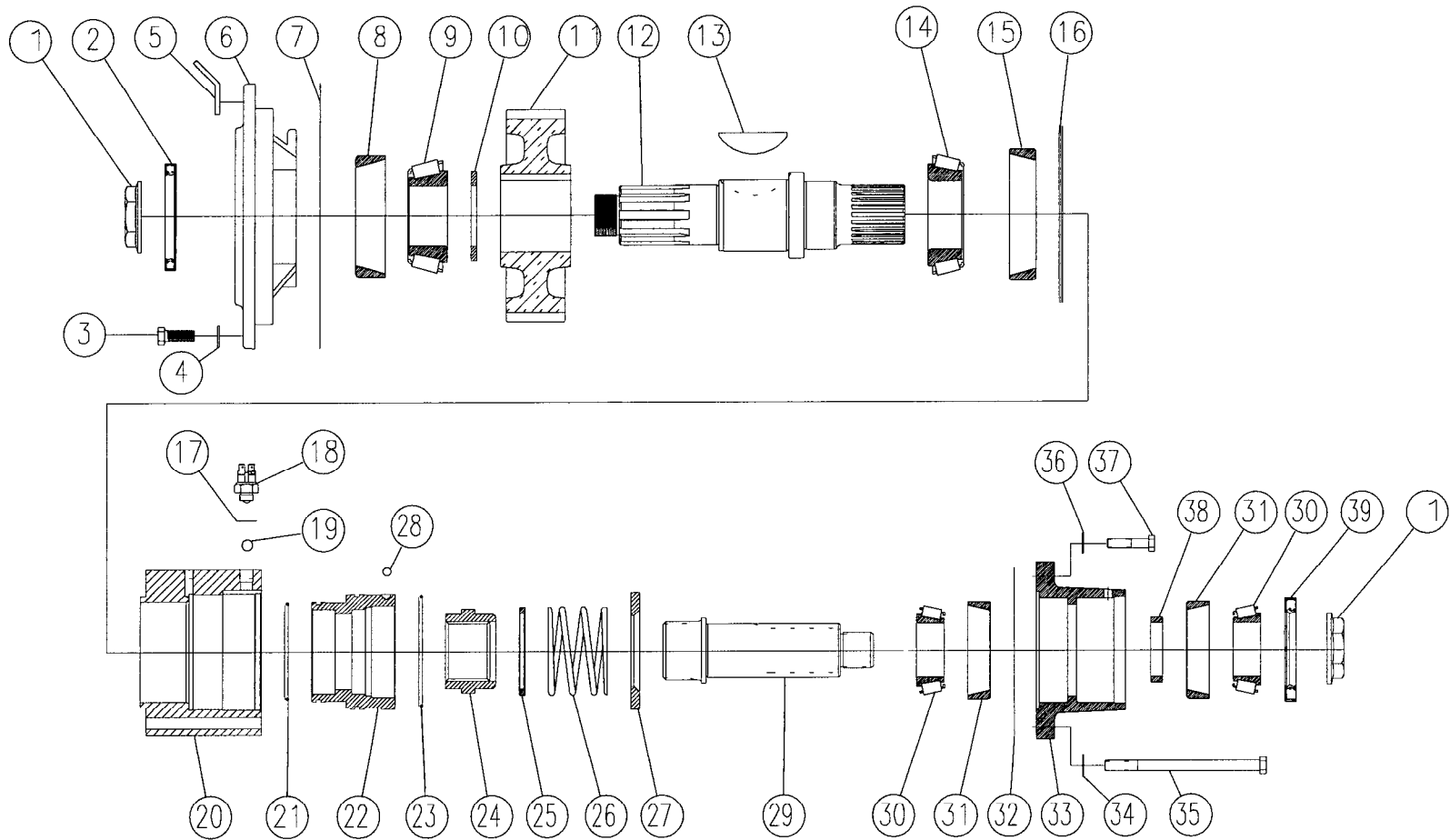
TC-270 UPPER SHAFT ASSEMBLY WITH PTO PROVISIONS

**TC-270 UPPER SHAFT ASSEMBLY**  
**Models with PTO Provisions**

| <u>ITEM</u> | <u>PART NO.</u> | <u>DESCRIPTION</u>                          | <u>QTY.</u> | <u>FOOT<br/>NOTE</u> |
|-------------|-----------------|---|-------------|----------------------|
| 1           | 688 738         | Nut, 1 3/4-12, Lock                         | 1           |                      |
| 2           | 732 355         | Seal  | 1           |                      |
| 3           | 265 238         | Bolt, 7/16-14 x 1 1/4 Hex Head              | 16          |                      |
| 4           | 927 347         | Washer, 7/16 Flat                           | 16          |                      |
| 5           | 273 687         | Bracket, Lifting                            | 2           |                      |
| 6           | 237 542 003     | Carrier, Front <u>with</u> Lubrication Port | 1           |                      |
| 7           | 427 523         | Gasket                                      | 1           |                      |
| 8           | 233 492         | Bearing Cup                                 | 1           |                      |
| 9           | 233 493         | Bearing Cone                                | 1           |                      |
| 10          | 927 797         | Washer, Input Shaft Spacer                  | 1           |                      |
| 11          | 432 628         | Gear, Input Shaft                           | 1           |                      |
| 12          | 776 257         | Shaft, Input <u>with</u> PTO Provision      | 1           |                      |
| 13          | 966 326         | Key   | 1           |                      |
| 14          | 233 489         | Bearing Cone                                | 1           |                      |
| 15          | 233 375         | Bearing Cup                                 | 1           |                      |
| 16          | 744 278         | Shim, .030 Thick, Coral                     | A/R         | 1                    |
|             | 744 279         | Shim, .015 Thick, Pink                      | A/R         | 1                    |
|             | 744 282         | Shim, .005 Thick, Blue                      | A/R         | 1                    |
|             | 744 283         | Shim, .002 Thick, Red                       | A/R         | 1                    |
| 17          | 235 655         | Cap, Top Rear (PTO Provisions model)        | 1           |                      |

Footnotes:

1. See section 6.2 of service manual for adjustment procedures.



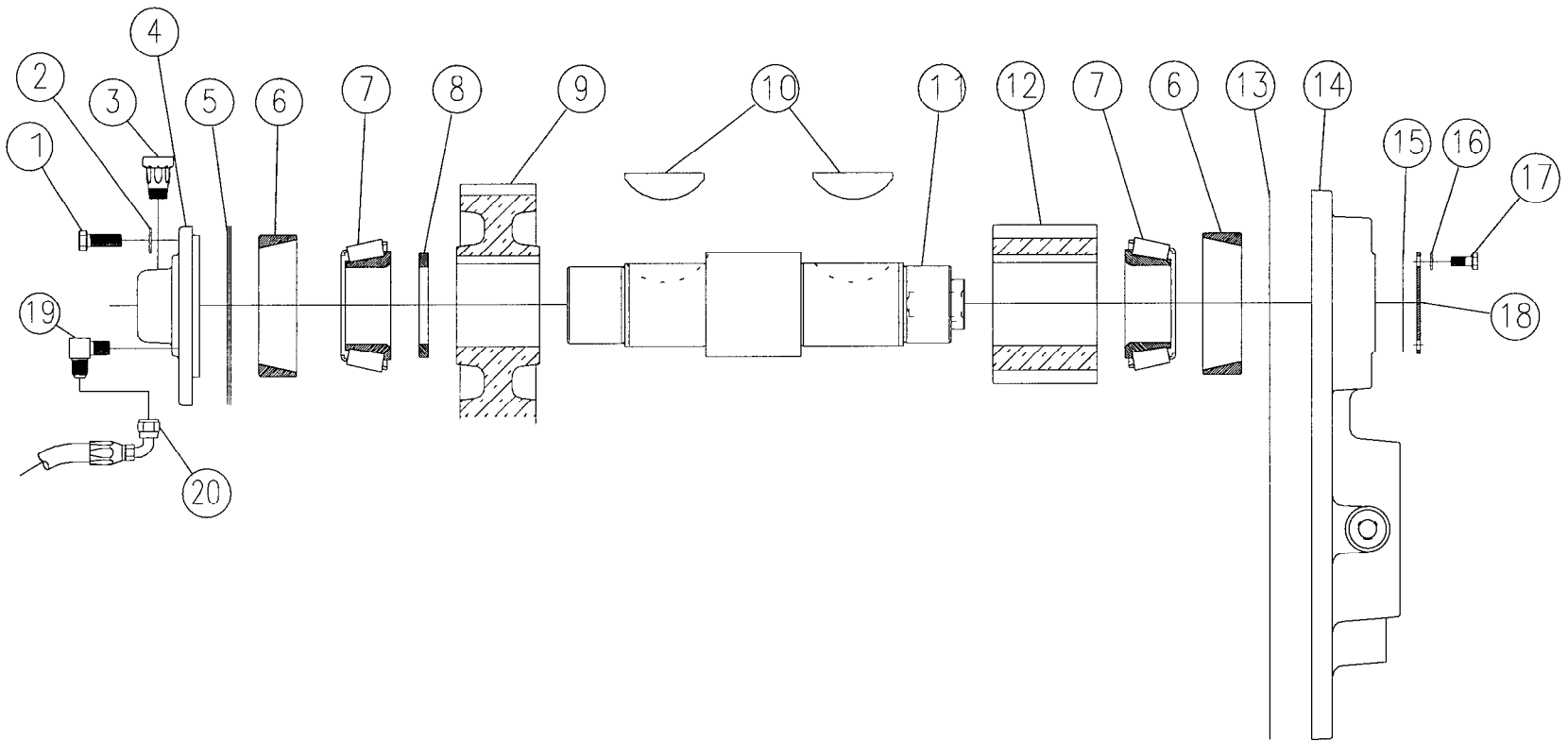
TC-270 UPPER SHAFT ASSEMBLY WITH PTO

**TC-270 UPPER SHAFT ASSEMBLY**  
**Models with PTO**

| <u>ITEM</u> | <u>PART NO.</u> | <u>DESCRIPTION</u>                        | <u>QTY.</u> | <u>FOOT NOTE</u> | <u>ITEM</u> | <u>PART NO.</u> | <u>DESCRIPTION</u>                            | <u>QTY.</u> | <u>FOOT NOTE</u> |
|-------------|-----------------|---|-------------|------------------|-------------|-----------------|---|-------------|------------------|
| 1           | 688 738         | Nut, 1 3/4-12, Lock                       | 2           |                  | 21          | 675 241 V14     | O-Ring, 3 7/8 ID x 1/8                        |             |                  |
| 2           | 732 355         | Seal                                      | 1           |                  | 22          | 753 247         | Piston, Annular                               | 1           |                  |
| 3           | 265 238         | Bolt, 7/16-14 X 1 1/4<br>Hex Head         | 8           |                  | 23          | 675 246 V14     | O-Ring, 4 1/2 ID x 1/8                        | 1           |                  |
| 4           | 927 347         | Washer, 7/16 Flat                         | 8           |                  | 24          | 432 664         | Gear, Declutch                                | 1           |                  |
| 5           | 273 687         | Bracket, Lifting                          | 2           |                  | 25          | 756 254         | Ring  | 1           |                  |
| 6           | 237 542 003     | Carrier, Front with Lubrication<br>Port   | 1           |                  | 26          | 777 542         | Spring  | 1           |                  |
| 7           | 427 523         | Gasket                                    | 1           |                  | 27          | 756 253         | Ring  | 1           |                  |
| 8           | 233 492         | Bearing Cup                               | 1           |                  | 28          | 225 222         | Ball, 3/8 Diameter, Steel                     | 1           |                  |
| 9           | 233 493         | Bearing Cone                              | 1           |                  | 29          | 776 258         | Shaft   | 1           |                  |
| 10          | 927 797         | Washer, Input Shaft Spacer                | 1           |                  | 30          | 233 536         | Bearing Cone                                  | 2           |                  |
| 11          | 432 628         | Gear, Input Shaft                         | 1           |                  | 31          | 233 352         | Bearing Cup                                   | 2           |                  |
| 12          | 776 257         | Shaft, Input <u>with</u> PTO<br>Provision | 1           |                  | 32          | 728 232         | Loctite, 515                                  | 3 oz.       |                  |
| 13          | 966 326         | Woodruff Key                              | 1           |                  | 33          | 237 577         | Carrier                                       | 1           |                  |
| 14          | 233 489         | Bearing Cone                              | 1           |                  | 34          | 927 347         | Washer, 7/16 SAE Flat                         | 6           |                  |
| 15          | 233 375         | Bearing Cup                               | 1           |                  | 35          | 283 237         | Capscrew,<br>7/16-14 x 6, Grade 5             | 6           |                  |
| 16          | 744 278         | Shim, .030 Thick, Coral                   | A/R         | 1                | 36          | 927 337         | Washer, 3/8 SAE Flat                          | 2           |                  |
|             | 744 279         | Shim, .015 Thick, Pink                    | A/R         | 1                | 37          | 265 483         | Capscrew, 3/8-16 x 1 3/4<br>Hex Head, Grade 5 | 2           |                  |
|             | 744 282         | Shim, .005 Thick, Blue                    | A/R         | 1                | 38          | 756 249 001     | Ring, Bearing Spacer, .396 Thick              |             | 2                |
|             | 744 283         | Shim, .002 Thick, Red                     | A/R         | 1                |             | 756 249 002     | Ring, Bearing Spacer, .402 Thick              |             | 2                |
| 17          | 927 427         | Washer, Switch Spacer                     | 1           |                  |             | 756 249 003     | Ring, Bearing Spacer, .408 Thick              |             | 2                |
| 18          | 798 245         | Switch, Shift Indicator                   | 1           |                  |             | 756 249 004     | Ring, Bearing Spacer, .414 Thick              |             | 2                |
| 19          | 225 286         | Ball, 1/2 Diameter, Steel                 | 1           |                  |             | 756 249 005     | Ring, Bearing Spacer, .420 Thick              |             | 2                |
| 20          | 478 243         | Housing, Declutch                         | 1           |                  |             | 756 249 006     | Ring, Bearing Spacer, .426 Thick              |             | 2                |
|             |                 |   |             |                  |             | 756 249 007     | Ring, Bearing Spacer, .432 Thick              |             | 2                |
|             |                 |   |             |                  | 39          | 732 389         | Seal  | 1           |                  |

Footnotes:

1. Select shims, item #16, to obtain .003 to .008 end float on the input shaft.
2. Select one spacer ring to give .001T to .005L end play with output yoke or sealing ring installed.



TC-270 INTERMEDIATE SHAFT ASSEMBLY WITHOUT LUBRICATION

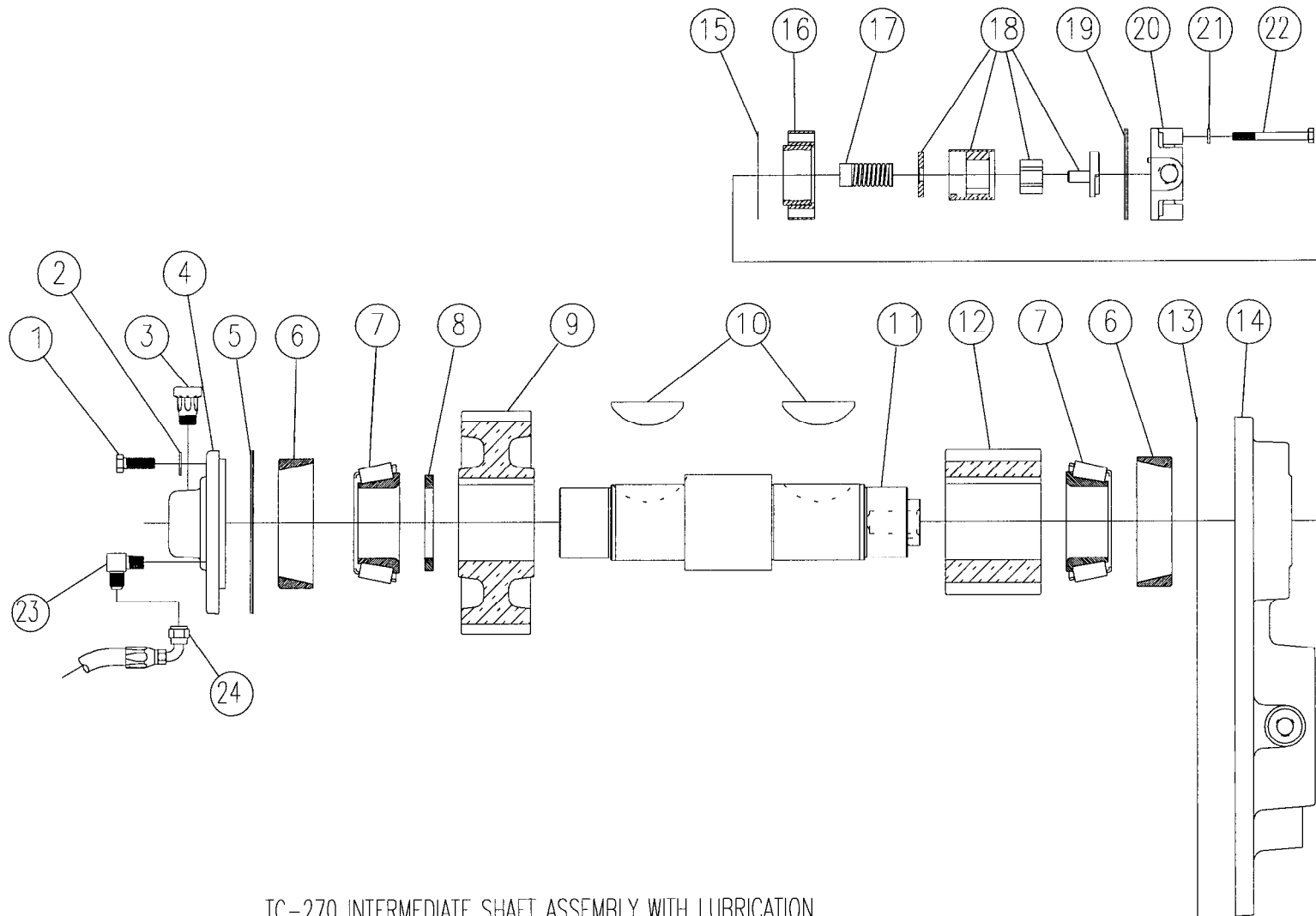


**TC-270 INTERMEDIATE SHAFT ASSEMBLY**  
**Models without Lubrication**

| <u>ITEM</u> | <u>PART NO.</u> | <u>DESCRIPTION</u>             | <u>QTY.</u> | <u>FOOT<br/>NOTE</u> |
|-------------|-----------------|--------------------------------|-------------|----------------------|
| 1           | 265 238         | Bolt, 7/16-14 x 1 1/4 Hex Head | 6           |                      |
| 2           | 927 347         | Washer, 7/16 Flat              | 6           |                      |
| 3           | 836 223         | Breather                       | 1           |                      |
| 4           | 235 572 003     | Cap, Intermediate Front        | 1           |                      |
| 5           | 744 356 001     | Shim, .002 Thick, Red          | A/R         | 1                    |
|             | 744 356 002     | Shim, .005 Thick, Blue         | A/R         | 1                    |
|             | 744 356 003     | Shim, .015 Thick, Pink         | A/R         | 1                    |
|             | 744 356 004     | Shim, .030 Thick, Coral        | A/R         | 1                    |
| 6           | 233 586         | Bearing Cup                    | 2           |                      |
| 7           | 233 587         | Bearing Cone                   | 2           |                      |
| 8           | 927 842         | Washer, Spacer                 | 1           |                      |
| 9           | 432 629         | Gear, Intermediate Direct      | 1           |                      |
| 10          | 966 326         | Key                            | 2           |                      |
| 11          | 776 326         | Shaft, Intermediate            | 1           |                      |
| 12          | 432 695         | Gear, Intermediate Underdrive  | 1           |                      |
| 13          | 427 542         | Gasket                         | 1           |                      |
| 14          | 237 635         | Carrier, Rear                  | 1           |                      |
| 15          | 427 468         | Gasket                         | 1           |                      |
| 16          | 927 299         | Washer, 5/16, Lock             | 6           |                      |
| 17          | 283 245         | Bolt, Hex Head, 5/16-18 x 3    | 6           |                      |
| 18          | 235 633         | Cap, Lubrication Pump Blanking | 1           |                      |
| 19          | 357 898         | Elbow, 90°                     | 1           |                      |
| 20          | 469 822 050     | Hose Assembly                  | 1           |                      |

Footnotes:

1. See section 6.3 of service manual for adjustment procedure.



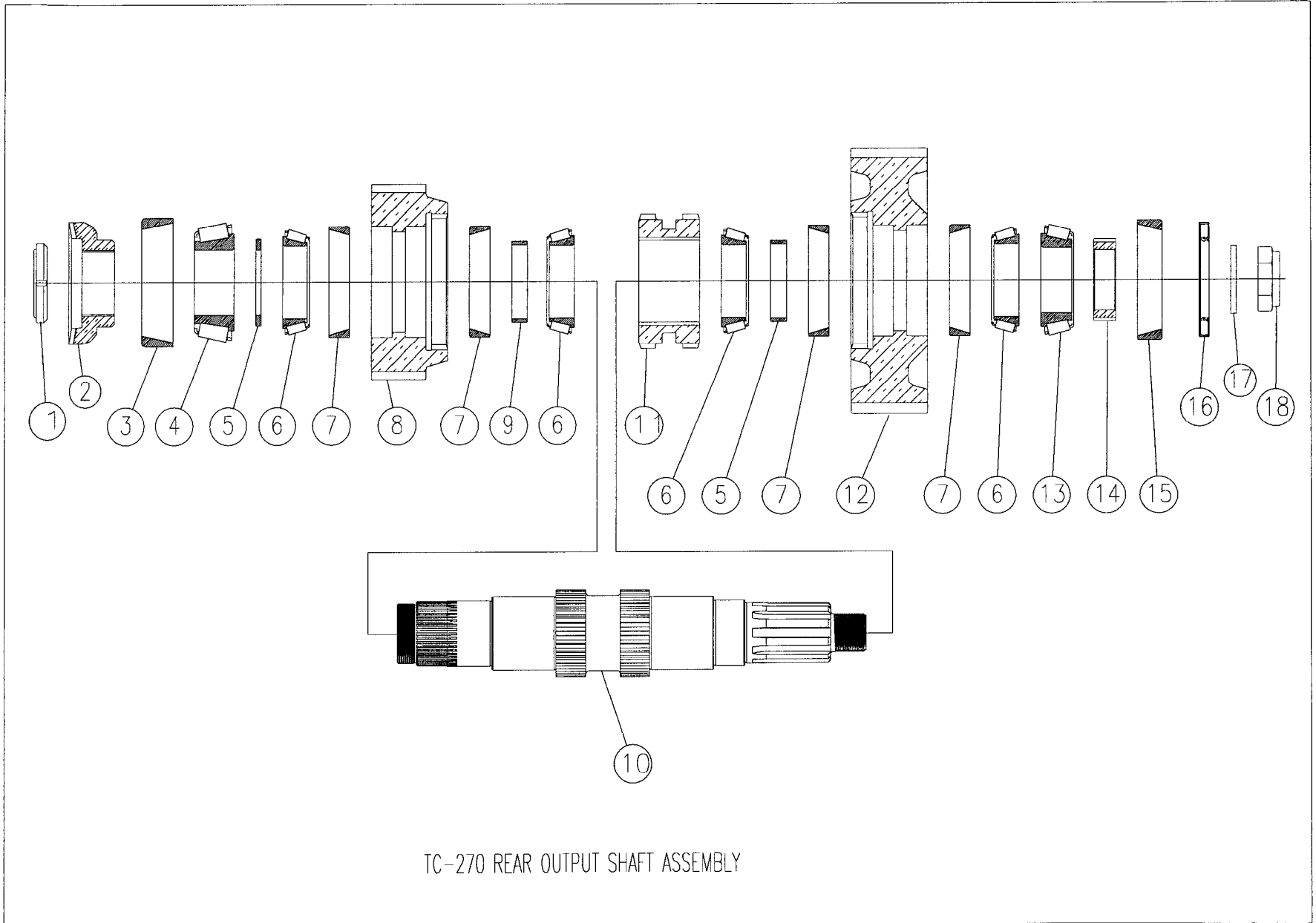
TC-270 INTERMEDIATE SHAFT ASSEMBLY WITH LUBRICATION

**TC-270 INTERMEDIATE SHAFT ASSEMBLY**  
**Models with Lubrication**

| <u>ITEM</u> | <u>PART NO.</u> | <u>DESCRIPTION</u>             | <u>QTY.</u> | <u>FOOT NOTE</u> | <u>ITEM</u> | <u>PART NO.</u> | <u>DESCRIPTION</u>                  | <u>QTY.</u> | <u>FOOT NOTE</u> |
|-------------|-----------------|--------------------------------|-------------|------------------|-------------|-----------------|-------------------------------------|-------------|------------------|
| 1           | 265 238         | Bolt, 7/16-14 x 1 1/4 Hex Head | 6           |                  | 13          | 427 542         | Gasket                              | 1           |                  |
| 2           | 927 347         | Washer, 7/16 Flat              | 6           |                  | 14          | 237 635         | Carrier, Rear                       | 1           |                  |
| 3           | 836 223         | Breather                       | 1           |                  | 15          | 427 468         | Gasket                              | 1           |                  |
| 4           | 235 572 003     | Cap, Intermediate Front        | 1           |                  | 16          | 7561324         | Spacer Ring & Bearing Assembly      | 1           |                  |
| 5           | 744 356 001     | Shim, .002 Thick, Red          | A/R         | 1                | 17          | 777 536         | Spring, Lubrication Pump, Pressure  | 1           |                  |
|             | 744 356 002     | Shim, .005 Thick, Blue         | A/R         | 1                |             |                 |                                     |             |                  |
|             | 744 356 003     | Shim, .015 Thick, Pink         | A/R         | 1                |             |                 |                                     |             |                  |
|             | 744 356 004     | Shim, .030 Thick, Coral        | A/R         | 1                | 18          | 786 296         | Lubrication Pump Cartridge Assembly | 1           |                  |
| 6           | 233 586         | Bearing Cup                    | 2           |                  |             |                 |                                     |             |                  |
| 7           | 233 587         | Bearing Cone                   | 2           |                  | 19          | 744 324         | Shim, Lubrication Pump              | A/R         | 2                |
| 8           | 927 842         | Washer, Spacer                 | 1           |                  | 20          | 235 492         | Cap, Lubrication Pump               | 1           |                  |
| 9           | 432 629         | Gear, Intermediate Direct      | 1           |                  | 21          | 927 299         | Washer, 5/16 Lock                   | 6           |                  |
| 10          | 966 326         | Key                            | 2           |                  | 22          | 283 245         | Bolt, Hex Head, 5/16-18 x 3         | 6           |                  |
| 11          | 776 326         | Shaft, Intermediate            | 1           |                  | 23          | 357 898         | Elbow, 90°                          | 1           |                  |
| 12          | 432 695         | Gear, Intermediate Underdrive  | 1           |                  | 24          | 469 822 050     | Hose Assembly                       | 1           |                  |

Footnotes:

1. See section 6.3 of service manual for adjustment procedures.
2. See section 6.7 of service manual for adjustment procedures.



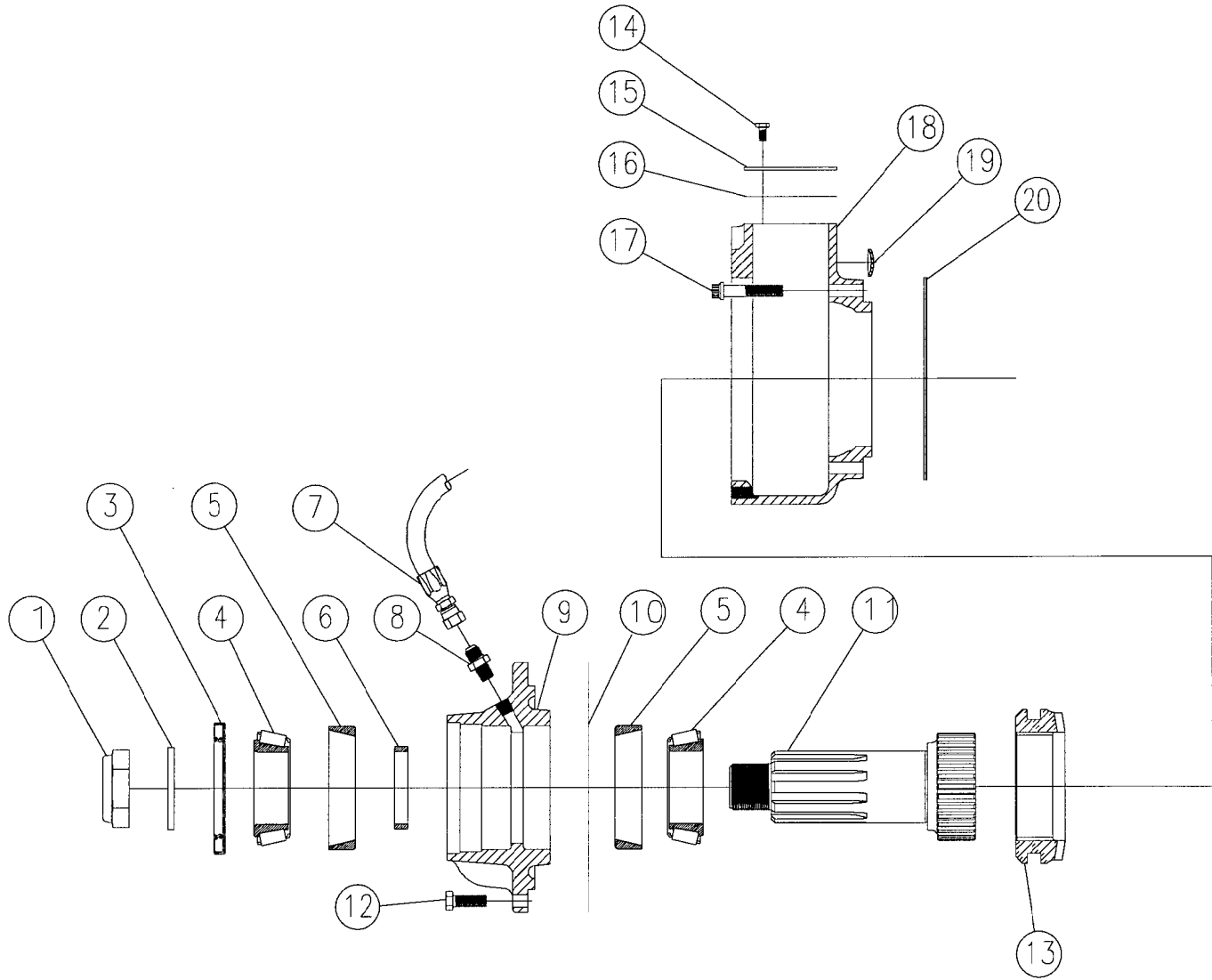
TC-270 REAR OUTPUT SHAFT ASSEMBLY

**TC-270 REAR OUTPUT SHAFT ASSEMBLY**

| <u>ITEM</u> | <u>PART NO.</u> | <u>DESCRIPTION</u>               | <u>QTY.</u> | <u>FOOT<br/>NOTE</u> |
|-------------|-----------------|----------------------------------|-------------|----------------------|
| 1           | 688 744         | Nut, 2.751-18, Bearing Lock      | 1           |                      |
| 2           | 432 688         | Gear, Front Declutch Fixed       | 1           |                      |
| 3           | 233 554         | Bearing Cup                      | 1           |                      |
| 4           | 233 556         | Bearing Cone                     | 1           |                      |
| 5           | 927 843         | Washer                           | 1           |                      |
| 6           | 233 528         | Bearing Cone                     | 4           |                      |
| 7           | 233 527         | Bearing Cup                      | 4           |                      |
| 8           | 432 659         | Gear, Lower Direct Drive         | 1           |                      |
| 9           | 756 237 001     | Ring, Bearing Spacer, .719 Thick |             | 1                    |
|             | 756 237 002     | Ring, Bearing Spacer, .716 Thick |             | 1                    |
|             | 756 237 003     | Ring, Bearing Spacer, .713 Thick |             | 1                    |
|             | 756 237 004     | Ring, Bearing Spacer, .710 Thick |             | 1                    |
| 10          | 776 327         | Shaft, Rear Output               | 1           |                      |
| 11          | 432 656         | Gear, Clutch Collar              | 1           |                      |
| 12          | 432 658         | Gear, Lower, Overdrive           | 1           |                      |
| 13          | 233 497         | Bearing Cone                     | 1           |                      |
| 14          | 432 696         | Gear, Electronic Speedo Sensor   | 1           |                      |
| 15          | 233 375         | Bearing Cup                      | 1           |                      |
| 16          | 732 428         | Seal, Rear Output                | 1           |                      |
| 17          | 927 775 006     | Washer, Output Shift             | 1           |                      |
| 18          | 688 642         | Nut, 1 3/4-16 Lock               | 1           |                      |

Footnotes:

1. Select one spacer ring. See section 6.4 of service manual for adjustment procedures.



TC-270 FRONT OUTPUT SHAFT ASSEMBLY

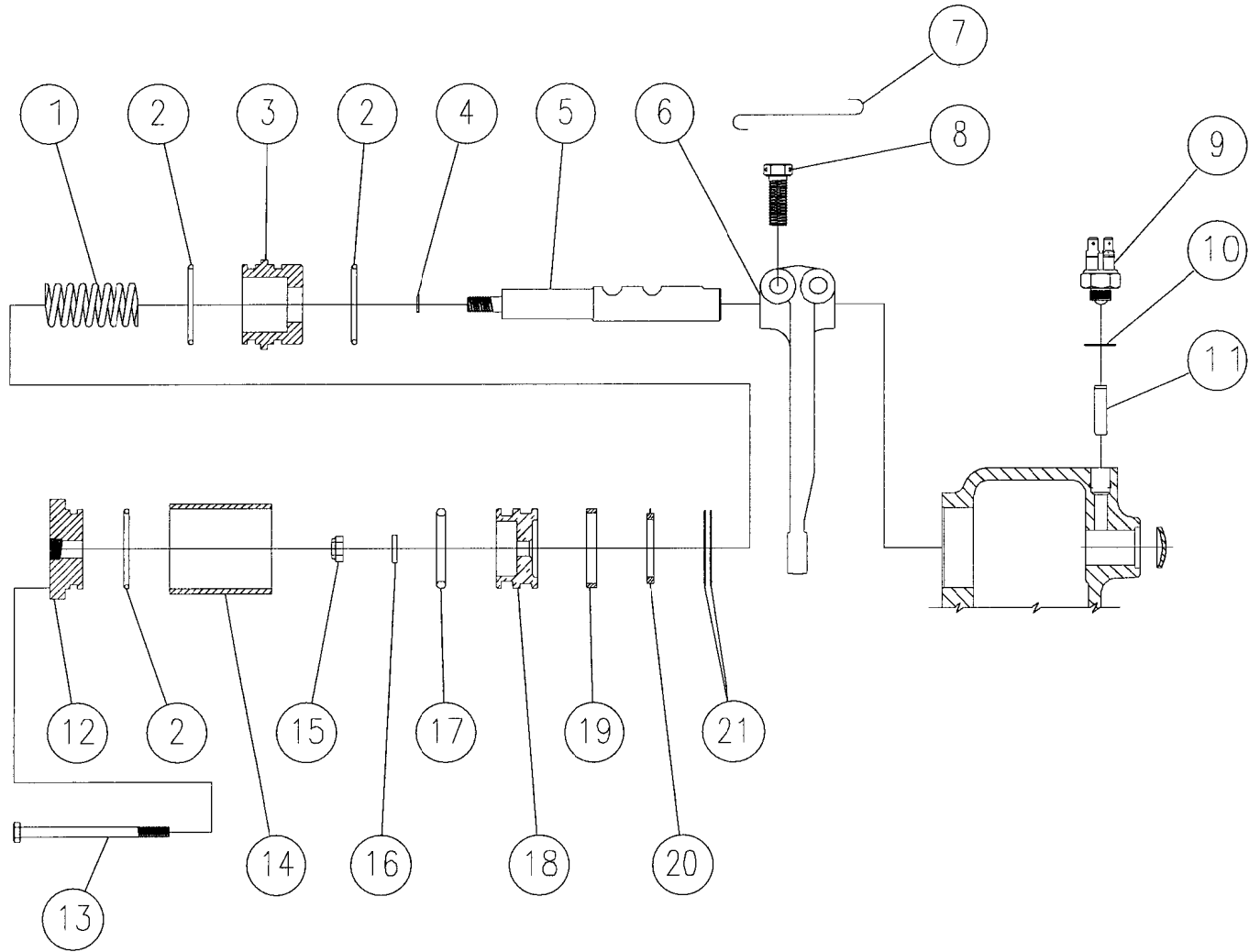
**TC-270 FRONT OUTPUT SHAFT ASSEMBLY**  
**Models with Declutch**

| <u>ITEM</u> | <u>PART NO.</u> | <u>DESCRIPTION</u>               | <u>QTY.</u> | <u>FOOT NOTE</u> | <u>ITEM</u> | <u>PART NO.</u> | <u>DESCRIPTION</u>             | <u>QTY.</u> | <u>FOOT NOTE</u> |
|-------------|-----------------|----------------------------------|-------------|------------------|-------------|-----------------|--------------------------------|-------------|------------------|
| 1           | 688 642         | Locknut, 1 3/4-16, Lock          | 1           |                  | 11          | 776 287         | Shaft, Front Output            | 1           |                  |
| 2           | 927 775 006     | Washer, Output                   | 1           |                  | 12          | 265 238         | Bolt, 7/16-14 x 1 1/4 Hex Head | 8           |                  |
| 3           | 732 333         | Seal                             | 1           |                  | 13          | 432 689         | Gear, Front Declutch Sliding   | 1           |                  |
| 4           | 233 572         | Bearing Cone                     | 2           |                  | 14          | 265 343         | Bolt, 1/4-20 x 1/2 Hex Head    | 4           |                  |
| 5           | 233 569         | Bearing Cup                      | 2           |                  | 15          | 792 866         | Plate                          | 1           |                  |
| 6           | 765 287 001     | Ring, Bearing Spacer, .540 Thick |             | 1                | 16          | 427 376         | Gasket                         | 1           |                  |
|             | 765 287 002     | Ring, Bearing Spacer, .545 Thick |             | 1                | 17          | 724 677         | Screw, 7/16-14 x 2 1/4, 12 Pt. | 6           |                  |
|             | 765 287 003     | Ring, Bearing Spacer, .550 Thick |             | 1                | 18          | 478 267         | Housing, Declutch              | 1           |                  |
|             | 765 287 004     | Ring, Bearing Spacer, .555 Thick |             | 1                | 19          | 788 328         | Plug, 1" Welch                 | 1           |                  |
| 7           | 469 882 050     | Hose Assembly                    | 1           |                  | 20          | 744 357 001     | Shim, .002 Thick, Red          | A/R         | 2                |
| 8           | 357 287         | Adapter                          | 1           |                  |             | 744 357 002     | Shim, .005 Thick, Blue         | A/R         | 2                |
| 9           | 237 622 002     | Carrier, Front Output            | 1           |                  |             | 744 357 003     | Shim, .015 Thick, Pink         | A/R         | 2                |
| 10          | 427 375         | Gasket                           | 1           |                  |             | 744 357 004     | Shim, .030 Thick, Coral        | A/R         | 2                |

Footnotes:

1. Select one spacer ring. See Section 6.5 of Service Manual for adjustment procedures.
2. See Section 6.5 of Service Manual for adjustment procedures.

TC-270 FRONT DECLUTCH AIR SHIFT ASSEMBLY



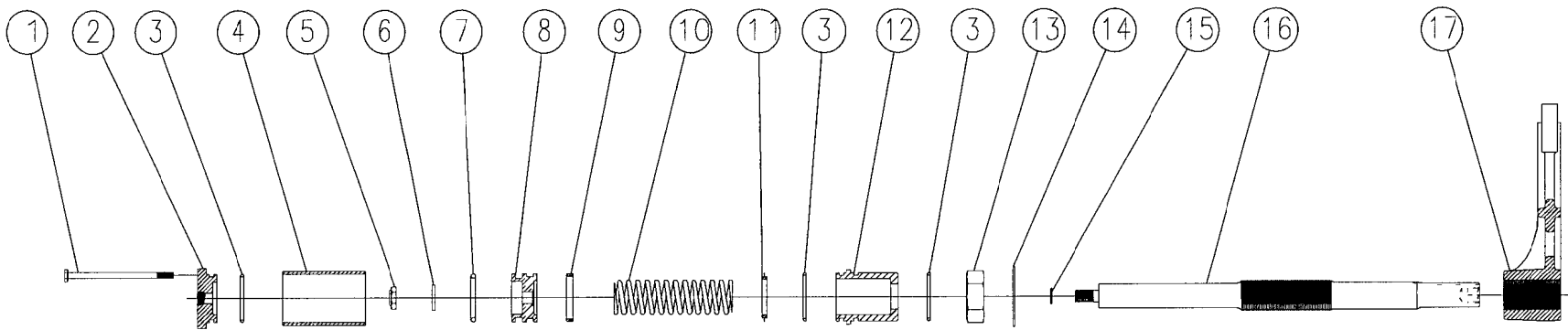


**TC-270 FRONT DECLUTCH AIR SHIFT ASSEMBLY**

| <u>ITEM</u> | <u>PART NO.</u> | <u>DESCRIPTION</u>                         | <u>QTY.</u> | <u>FOOT<br/>NOTE</u> |
|-------------|-----------------|--|-------------|----------------------|
| 1           | 777 477         | Spring, Front Drive Shift                  | 1           |                      |
| 2           | 675 224         | O-Ring, Piston                             | 3           |                      |
| 3           | 883 482         | Tube, Front Drive Shift Cylinder Adapter   | 1           |                      |
| 4           | 782 288         | O-Ring                                     | 1           |                      |
| 5           | 776 296         | Shaft, Front Drive Shift                   | 1           |                      |
| 6           | 367 254         | Fork, Front Declutch Shift                 | 1           |                      |
| 7           | 947 223         | Lockwire                                   | 1           |                      |
| 8           | 265 768         | Bolt, 7/16-20 x 1 3/8, Drilled, Grade 8    | 2           |                      |
| 9           | 798 245         | Switch, Shift Indicator                    | 1           |                      |
| 10          | 927 427         | Washer, Copper                             | 1           |                      |
| 11          | 746 628         | Pin, 5/16 Diameter                         | 1           |                      |
| 12          | 235 352         | Cap, Front Drive Shift Cylinder            | 1           |                      |
| 13          | 265 769         | Bolt, 1/4-20 x 3 3/4 Hex Head              | 4           |                      |
| 14          | 883 887 017     | Tube, Front Drive Shift Cylinder           | 1           |                      |
| 15          | 688 464         | Nut, 3/8-24 Lock                           | 1           |                      |
| 16          | 927 643         | Washer                                     | 1           |                      |
| 17          | 675 326         | O-Ring                                     | 1           |                      |
| 18          | 753 232         | Piston, Front Drive Shift                  | 1           |                      |
| 19          | 339 223         | Felt Wiper                                 | 1           |                      |
| 20          | 736 747         | Ring, Piston Stop                          | 1           |                      |
| 21          | 927 822         | Washer, Front Drive Shift Cylinder Adapter | A/R         | 1                    |

Footnotes:

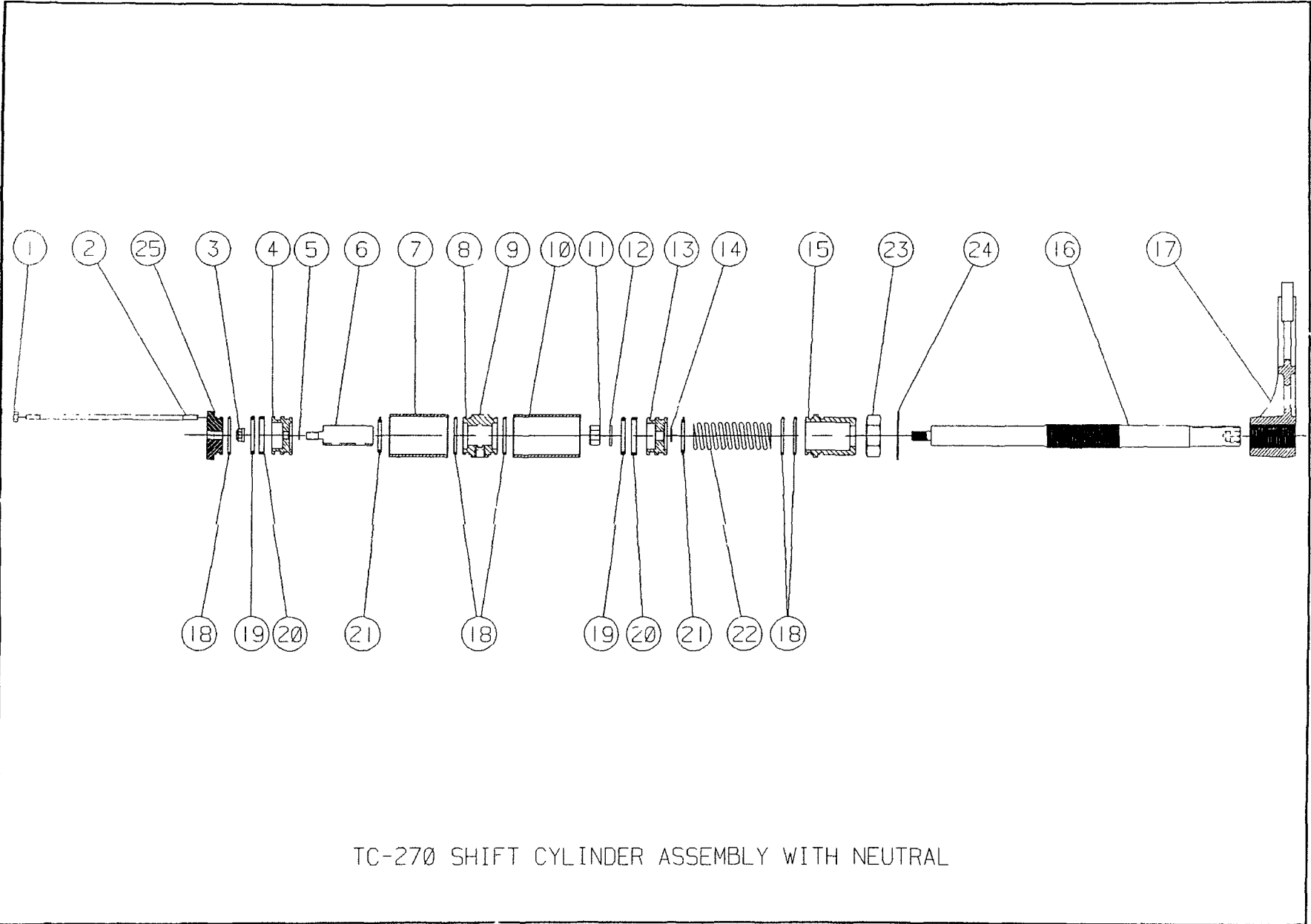
1. See Section 6.6 of service manual for adjustment procedures.



TC 270 SHIFT CYLINDER ASSEMBLY WITHOUT NEUTRAL

**TC-270 SHIFT CYLINDER ASSEMBLY**  
**Models without Neutral**

| <u>ITEM</u> | <u>PART NO.</u> | <u>DESCRIPTION</u>               | <u>QTY.</u> |
|-------------|-----------------|----------------------------------|-------------|
| 1           | 265 772         | Bolt, 1/4-20 x 4 1/2 Hex Head    | 4           |
| 2           | 235 528         | Cap, H-L Shift Cylinder          | 1           |
| 3           | 675 224         | O-Ring                           | 3           |
| 4           | 883 887 005     | Tube, H-L Shift Cylinder         | 1           |
| 5           | 688 725         | Nut, 1/2-13, Lock                | 1           |
| 6           | 927 553         | Washer, H-L Shift Shaft          | 1           |
| 7           | 675 326         | O-Ring, Piston                   | 1           |
| 8           | 753 245         | Piston, H-L Shift                | 1           |
| 9           | 339 223         | Felt Wiper                       | 1           |
| 10          | 777 486         | Spring, H-L Shift                | 1           |
| 11          | 736 747         | Ring, Piston Stop                | 1           |
| 12          | 883 683         | Tube, H-L Shift Cylinder Adapter | 1           |
| 13          | 688 245         | Nut, 1 1/4-12, Jam               | 1           |
| 14          | 793 464         | Plate, Shift Fort Nut, Locking   | 1           |
| 15          | 675 014         | O-Ring                           | 1           |
| 16          | 776 328         | Shaft, H-L Shift                 | 1           |
| 17          | 367 288         | Fork, H-L Shift                  | 1           |



TC-270 SHIFT CYLINDER ASSEMBLY WITH NEUTRAL

**TC-270 SHIFT CYLINDER ASSEMBLY**  
**Models with Neutral**

| <u>ITEM</u> | <u>PART NO.</u> | <u>DESCRIPTION</u>               | <u>QTY.</u> |
|-------------|-----------------|----------------------------------|-------------|
| 1           | 688 395         | Nut, 1/4-20, Hex                 | 1           |
| 2           | 788 546 002     | Stud, 1/4-20 x 9"                | 4           |
| 3           | 688 464         | Nut, 3/8-24, Flexlock            | 1           |
| 4           | 753 232         | Piston, Neutral Shift            | 1           |
| 5           | 782 288         | O-Ring                           | 1           |
| 6           | 769 389         | Shaft, Neutral Shift             | 1           |
| 7           | 883 887 006     | Tube, Neutral Shift              | 1           |
| 8           | 927 643         | Washer                           | 1           |
| 9           | 883 893         | Tube, Neutral Shift Adapter      | 1           |
| 10          | 883 887 005     | Tube, H-L Shift Cylinder         | 1           |
| 11          | 688 726         | Nut. 1/2-13, Lock                | 1           |
| 12          | 927 553         | Washer                           | 1           |
| 13          | 753 245         | Piston, H-t Shift                | 1           |
| 14          | 675 014         | O-Ring                           | 1           |
| 15          | 883 683         | Tube, H-L Shift Cylinder Adapter | 1           |
| 16          | 776 328         | Shaft, H-L Shift                 | 1           |
| 17          | 367 288         | Fork, Shift                      | 1           |
| 18          | 675 224         | O-Ring, Adapters & Caps          | 5           |
| 19          | 675 326         | O-Ring                           | 2           |
| 20          | 339 223         | Felt Wiper                       | 2           |
| 21          | 736 747         | Ring, Piston Stop                | 2           |
| 22          | 777 486         | Spring, H-L Shift                | 1           |
| 23          | 688 245         | Nut, 1 1/4-12 Jam                | 1           |
| 24          | 793 464         | Plate, Shift Fork Nut, Locking   | 1           |
| 25          | 235 352         | Cap, Shift Cylinder              | 1           |

**TC-270 PARTS NOT ILLUSTRATED**

| <u>ITEM</u> | <u>PART NO.</u> | <u>DESCRIPTION</u>  | <u>QTY.</u> | <u>FOOT<br/>NOTE</u> |
|-------------|-----------------|---|-------------|----------------------|
| 1           | 273 764         | Filter Mounting Bracket   | 1           | 1                    |
| 2           | 345 267         | Filter, Oil   | 1           | 1                    |
| 3           | 345 268         | Strainer, Oil   | 1           | 1                    |
| 4           | 478 288         | Housing, Transfer Case Main   | 1           |                      |
| 5           | 737 551 001     | Lubrication Piping Kit<br>For assembly no. 873 044 003 and<br>873 044 006 (basic case with <u>no</u><br>provisions for field installation<br>of PTO). |             |                      |
|             | 737 551 002     | Lubrication Piping Kit<br>For assembly no. 873 044 004 (model<br>with PTO).   |             |                      |
|             | 737 551 004     | Lubrication Piping Kit<br>For assembly no. 873 044 007 (basic<br>case <u>with</u> provisions for field installation<br>of PTO).                       |             |                      |
| 6           | 758 232         | Plug, 1/4 NPT   |             |                      |
| 7           | 758 274         | Plug, 3/4 NPT Magnetic, Oil Drive   |             |                      |
| 8           | 758 352         | Plug, 3/4 NPT Oil Fill  |             |                      |

Footnotes:

1. Part is included in lubrication piping kit.